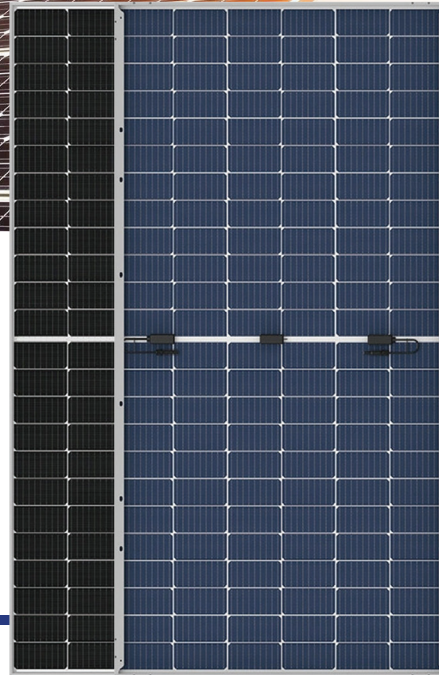


SINCE  
1998

**solaire**  
A Lagnuvo Initiative

## SOLAR MODULES **MONO PERC 10BB**

530W - 540W  
Bifacial with Transparent Backsheet



## FEATURES

- AR Coated Tempered Glass  
Anti-Reflective Module Surface
- Excellent Module Efficiency
- Positive Power Tolerance Up to 5W
- Pre and Post EL Checking to ensure defect free modules
- IP68 Junction Box for Long Term Endurance
- Ensure safety parameters through safety test
- Quality and reliability assurance in standard weather condition

## The Industry's Benchmark

Solaire is an internationally renowned leading solar energy cost effective befitting solutions provider having core competency in high efficiency PV module manufacturing and MNC level solution provider. Solaire PV modules are the best in class in terms of power output and long-term reliability.

## Product Certificates

- Quality Trusted Mark
- Salt Mist Corrosion Resistance
- Micro Crack & PID Free
- Certified ISO 9001 Quality Management System
- ISO 14001 Environmental Management System

## Made In India

- 30 years industry leading linear power output warranty\*
- 15 years product warranty on materials and workmanship

# TECHNICAL DATA

ELECTRICAL CHARACTERISTICS*	540W		535W		530W	
	STC	NOCT	STC	NOCT	STC	NOCT
Nominal Maximum Power (Pmax)	540	408.19	535	404.41	530	400.63
Optimum Operating Voltage (Vmp)	42.81	39.49	42.6	39.29	42.4	39.11
Optimum Operating Current (Imp)	12.63	10.35	12.56	10.29	12.5	10.24
Open Circuit Voltage (Voc)	49.3	46.21	49.03	45.96	48.88	45.82
Short Circuit Current (Isc)	13.51	10.91	13.42	10.83	13.38	10.80
Module Eff(%)	20.98		20.78		20.59	

\*PERFORMANCE UNDER STANDARD TEST CONDITIONS (STC) (irradiance of 1000 W/m<sup>2</sup>, spectrum AM 1.5 and cell temperature of 25°C.)

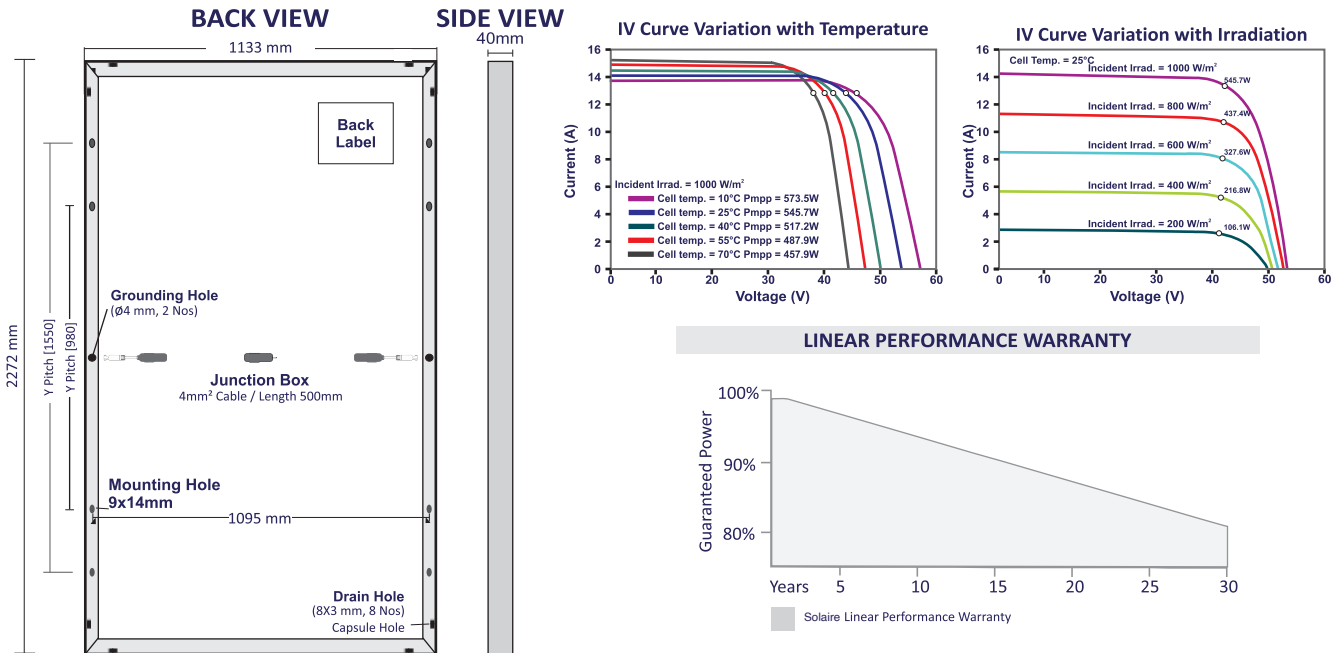
\*PERFORMANCE UNDER NOCT (NOCT irradiances of 800 W/m<sup>2</sup>, ambient temperature of 20°C, Wind speed 1m/sec)

## BI-FACIAL OUTPUT - BACKSIDE POWER GAIN @ STC\* [\*The bifacial gains are depend on the power plant Design and Matrix.]

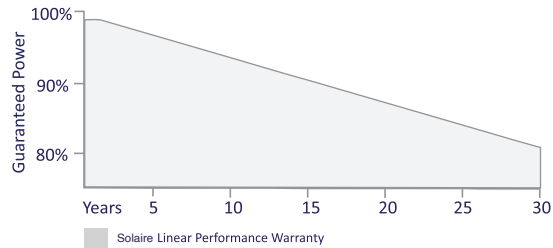
Gain (%)	Parameter	540W	535W	530W
10%	Nominal Maximum Power (Pmax)	594	588	583
	Module Eff (%)	23.08	22.86	22.65
15%	Nominal Maximum Power (Pmax)	621	615	610
	Module Eff (%)	24.12	23.90	23.68
20%	Nominal Maximum Power (Pmax)	648	642	636
	Module Eff (%)	25.17	24.94	24.71

## Mechanical Specifications

Dimensions (L x W x T in mm)	2272 x 1133 x 40
Weight(kg)	28.6
Cell type / No Of Cell	Mono PERC Bifacial / 144 [12x6 / 12x6]
Aluminum Frame [40HS]	Silver Anodized Aluminum Alloy
Front Cover (Tempered Glass)	3.2 mm
Encapsulate	PID Free EVA (Ethylene Vinyl Acetate) & UV Resistant
Back Cover	Transparent Backsheet
Junction Box / Connector rating/Type	Split Junction Box (Ip68) - Weatherproof / MC4 compatible
Cable Cross - Section & Length	4mm <sup>2</sup> & 500mm
Application Class Rating	Class A
Safety Class Rating	Class II
Mechanical Load Test (as per IEC & UL)	5400 Pa-Front; 2400 Pa-Back
Mounting Holes Pitch (Y)-mm	[A] 980mm [B] 1550mm
Mounting Holes Pitch (X)-mm	1095mm



### LINEAR PERFORMANCE WARRANTY



\*graphics shown herein above are reference purpose only. Please consult Solaire Technical Team for any further clarification.

## MAXIMUM OPERATING CONDITIONS

Operating Temperature:	-40°C to +85°C
Maximum System Voltage:	1500V
Maximum Series Fuse Rating:	25A

## TEMPERATURE COEFFICIENTS

Current Temperature Coefficients $\alpha(Isc)$ :	0.0211%/°C
Voltage Temperature Coefficients $\beta(Voc)$ :	-0.2914%/°C
Power Temperature Coefficients $\gamma(Pmax)$ :	-0.3971%/°C

**Caution:** Please read safety and installation instructions before using the product. **\*Warranty:** Linear power warranty for 30 years, with degradation up to 2% in 1st year and 0.6%/ year from year 2 to year 30. Please read Solaire warranty documents thoroughly. **Disclaimer:** Specifications included in the datasheet are subject to change without prior notice owing to conditions innovation on the product Development and R&D Activities. Solaire reserves the right to make any adjustment to the information described here. Dataset contained in this specification do not form a representative of a single module data. @T&C Apply.